

On The Tooth

Client information Seminar

Sept 2010

by Dr Rob Miller

Dental disease in cats and dogs

- **How it starts and progresses**
 - **plaque**
 - **calculus**
 - **periodontal disease**

Plaque deposition



Calculus formation

- **Soft plaque hardens due to minerals in saliva**



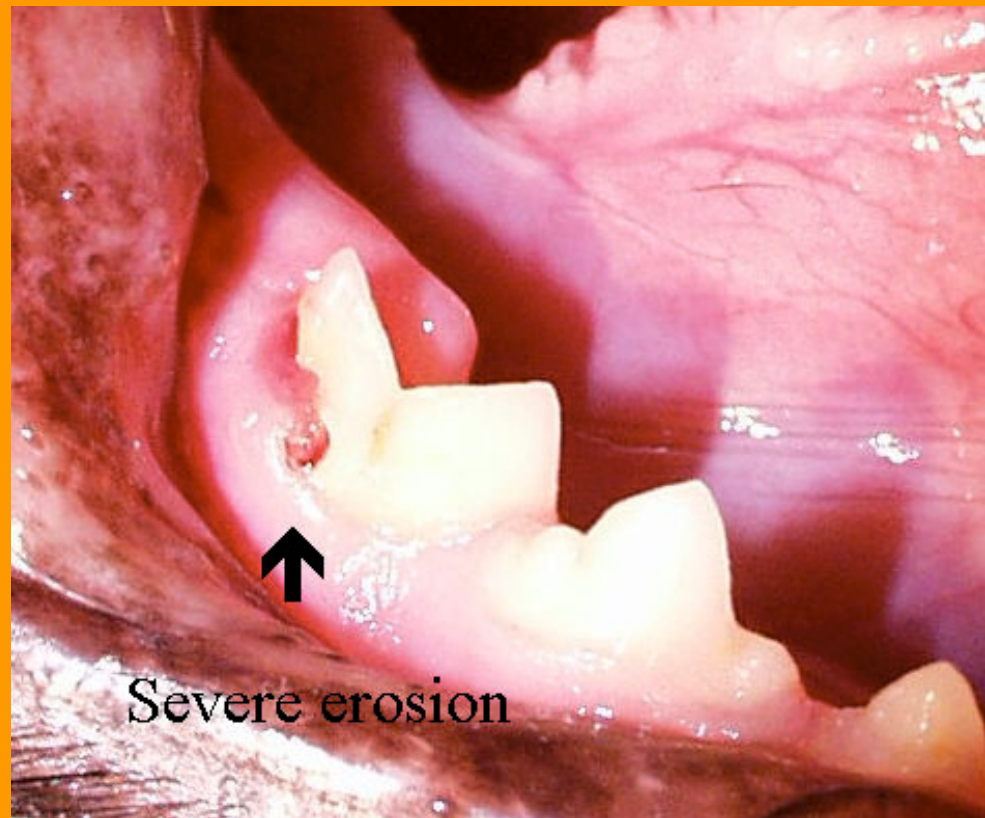
Periodontal Disease

- **Disease of the teeth supporting tissues including the alveolar bone**



Specific conditions

- **FORLS in cats**



Specific conditions

- **Broken teeth**
- **Fistula**
- **Abscess formation**



Photo courtesy TFH Publications



Common abscess presentation

- **Swelling below the eye**
- **discharge**
- **recurrent**



Treatment

- **Prevention (better than...)**
- **Cure**

Keep teeth clean

- **Prophy dental - GA**



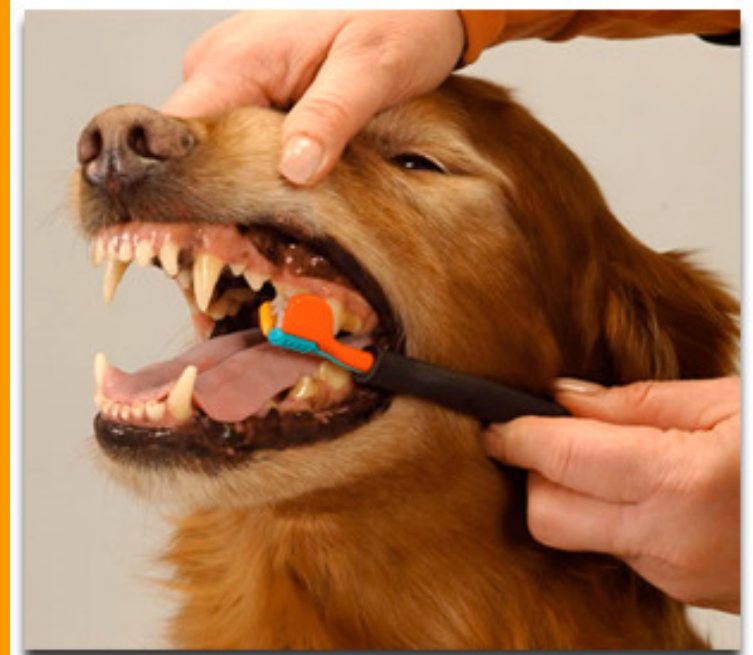
What you can do at home

- **Brushing**
- **Special diets**
- **Water additives**
- **Dental chews**

Brushing Teeth

Cats and Dogs

- **Most effective method**
- **Special brushes**
- **Special pastes**



Special Diets

- Hill's t/d
- Eukanuba DDS



Water additives

- **Aquadent**
- **Oral hygiene sprays**



Dental chews

- **Greenies**
- **Dentabone**
- **pigs ears**
- **+ many more..**



Ultrasonic descale and polish

- **Even with home prevention**
- **Some require a yearly clean**
- **Removes soft plaque**
- **Removes calculus**
- **Polishes teeth**
- **Example....**

